



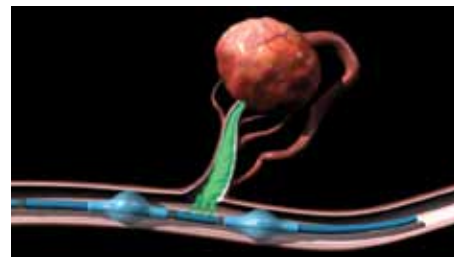
IsoFlow Lateral Infusion Catheter

COMPANY	Vascular Designs, Inc.
PHONE	(408) 484-9010
WEB	www.vasculardesigns.com/product-details.htm

KEY FEATURES

- IsoFlow lateral infusion catheter allows physicians to isolate and target specific tissues
- Precisely deliver physician-specified agents to the targeted tissues
- Deliver higher concentrations, virtually eliminating reflux to nontargeted tissues
- Deliver multiple treatments to targeted therapy sites in a single procedure

Vascular Designs, Inc. (San Jose, CA) and National Medical Sales, LLC (West Chester, PA) have entered into a long-term commercialization agreement. National Medical Sales will debut the Isoflow lateral infusion catheter to interventional radiologists in the United States.



The IsoFlow infusion catheter is a multilumen, dual-balloon catheter designed to isolate a specific treatment region from blood flow while allowing infusion of physician-specified fluids into the region, virtually eliminating reflux to nontarget tissue.

"In 9 of 11 transarterial chemoembolization cases, the entire dose was delivered without evidence of reflux. In two transarterial chemoembolization cases, 80% to 90% was delivered with stagnation, but no reflux suggested. In no case was nontarget embolization suggested," said Wayne Monsky, MD, PhD, an interventional radiologist based in Sacramento, California. "The initial clinical evaluation of this novel catheter for super selective chemoembolization suggests excellent technical performance, efficacy, and safety. Protected, selective, isolated delivery of the entire dose is usually obtained." ■