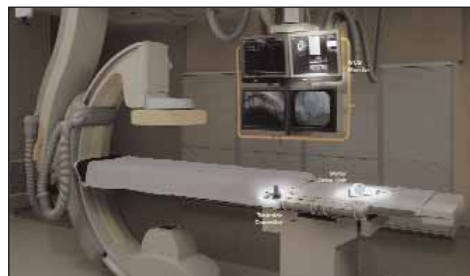


iLab

COMPANY	Boston Scientific Corporation
PHONE	(508) 650-8000
WEB	www.bostonscientific.com
KEY FEATURES	
<ul style="list-style-type: none"> • Installs directly into the cardiac catheterization lab or radiology suite • Tableside controller • Touch panel provides an intuitive user interface • Dynamic Review feature enhances image interpretation • Easy-to-upgrade platform 	

Boston Scientific Corporation (Natick, MA) has launched its next-generation intravascular ultrasound (IVUS) imaging system, the iLab Ultrasound Imaging System. According to the company, the iLab's advanced software fea-



tures allow physicians to see images inside the heart as well as the coronary and peripheral arteries to assist with diagnosis and device selection.

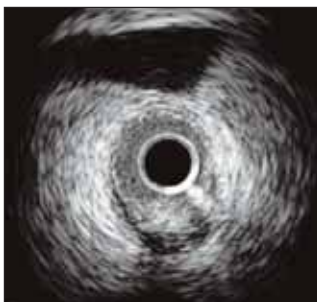
The iLab can be directly installed into the cardiac catheterization lab or radiology suite, enabling physicians to quickly and easily incorporate IVUS technology into their daily procedures. The system's tableside controller gives physicians control of the device within the sterile field, and the unique Dynamic Review feature enhances image interpretation. The system's touch panel provides an intuitive user interface with prompts that correspond to the particular stage of the procedure. In addition, the easy-to-upgrade platform allows for future innovation to keep pace with a fast-moving health care environment, the company says.

iLearn

COMPANY	Boston Scientific Corporation
PHONE	(508) 650-8000
WEB	www.bostonscientific.com
KEY FEATURES	
<ul style="list-style-type: none"> • Classroom and hands-on courses • Three levels of training • Opportunity to build user confidence with IVUS • Facilitates in-depth conversations on treatment strategies and options 	

Boston Scientific Corporation (Natick, MA) has launched its iLearn Education Series. Designed for physicians, fellows, nurses, and technologists, the iLearn Series consists of classroom and hands-on courses that build knowledge and confidence to incorporate IVUS into daily practice.

According to the company, there are three levels of training available. The first level, IVUS Essentials, provides product-specific training for the entire care delivery team. The 3-day program provides an opportunity for nurses, technologists, fellows, and physicians to receive training on the new Boston Scientific iLab Ultrasound Imaging System in their hospital environments. The second level, IVUS with a Purpose, is a bridge between the Essentials Course and the Advanced Courses and provides educational tools to build the knowledge and confidence required to incorporate IVUS into daily practice. The third level, IVUS Advanced Programs, builds on current IVUS knowledge and improves accuracy and confidence in using IVUS during



more complex interventions. According to the company, the IVUS Advanced Course for physicians and fellows provides an opportunity for in-depth conversations on treatment strategies and options. The combination of easy-to-use iLab and iLearn technology and a care delivery team with enhanced skills will help IVUS become a routine diagnostic choice for the best patient care, the company says.

Xtract Aspiration Catheter

COMPANY	Lumen Biomedical, Inc.
PHONE	(763) 746-9562
WEB	www.lumenbio.com
KEY FEATURES <ul style="list-style-type: none"> • Braided to the distal end for improved torque response • Directional tip allows a full sweep within the vessel to overcome wire bias • Large-area, circular cross section tip provides strong aspiration power • .014-inch guidewire compatible 	

Lumen Biomedical, Inc. (Plymouth, MN) has launched the Xtract Aspiration Catheter, a single-user, .014-inch



guidewire-compatible, temporary intravascular extraction and aspiration catheter system. According to the company, the Xtract is indicated for the removal of fresh, soft emboli and thrombi from vessels in the arterial system. It has a distal radiopaque tip marker, a shaft with varying stiffness, a rapid-exchange port, and a proximal luer-lock hub. The system consists of (1) Xtract catheter, (1) extension tube with stopcock, (2) 30-mL locking syringes, and (1) 40- μ m cell strainer. The Xtract catheter's directional tip and favorable torque response allow physicians to treat difficult-to-reach segments of vessels, the company says. ■